

## Director's Jottings

**Would you like to see more local choice, with the provision of more church secondary schools in the diocese? If so, read on and take part in our online survey.**



There will be several new schools established in our area over the next few years. The regulations have changed and it falls to the Local Authority to 'commission' a new school and, in most cases, to organise a competition. A wide variety of entrants are now encouraged, including other schools, trusts, charities and churches. The government's intention is to

widen the range of education providers and to create more choice and diversity. There's a particular emphasis too on responding to parental demand.

Many of our new schools will be built to serve new communities and families who will live in houses not yet built. In these circumstances gauging parental demand presents its own challenges. However, church schools are popular with parents and there is ample national and local evidence of this.

We are conducting a simple online survey until the end of term. The key question is: "If there were locally an accessible Church of England secondary school (11-16) would this provide a choice you would actively welcome?"

### Inside this issue:

#### Director's Jottings

1

#### From the Schools Team

2

- From the desk of the Finance & Buildings Officer

#### From the Diocese

- Green Living Fair

#### For Governors

- Newly appointed Governors

#### From our Schools

3

- Victory in maths for Milton
- Chevelay turns back the clock
- Idea has legs—and school runs with it!
- Bard bid to boost culture

#### The Back Page

4

- In our Prayers this Month
- Vacancies
- Dates for the Diary
- SIAS Reports

We are doing this now because we have been asked to find out what support there might be for a new church secondary school in Newmarket, close to many of our East Cambridgeshire primary schools. As you may know, Suffolk is re-organising its system and removing its Middle Schools and this might create an opportunity for a new church school. But looking further ahead, it would be helpful to have an indication of the degree of support there may be elsewhere in the diocese.

The survey takes just a minute to complete and you can find it through the link at the top of education homepage: <http://www.ely.anglican.org/education>. **Please encourage as many people as possible to have their say.**

### Our schools are doing well!

As we approach the end of the current three year inspection cycle, we are delighted that 70% of our schools are judged to be 'good' or 'outstanding' by both Ofsted and SIAS (in Cambridgeshire, the figures are 78.3% and 93% respectively). None of our schools are in a 'category' of weakness. That's down to the dedication and professionalism of staff and governors and their very special spirit.

### A policy for new schools

Our diocesan policy on new schools is straightforward. We wish to continue to provide an even spread of primary schools and to have a presence wherever circumstances permit. And we wish to increase our secondary provision, presently one of the lowest in the country.

That is why we have submitted proposals for the first primary school and the secondary school in Northstowe. The churches make a major contribution to community development—at the heart of our centuries old parish system – and we seek to serve the new town from the very beginning through its first primary school, set to open in 2009. Nationally, the Church is the largest sponsor of Academies and we have teamed up with Edison Schools, to offer the new town an innovative, yet rooted, inclusive academy school. You can read all the proposals by following the link from <http://www.ely.anglican.org/education>



Tim Elbourne

There will also be two Public Meetings this week at which the proposals will be presented: **Primary school meeting** 9 July, Over Community Centre. Presentation of bids and Q&A from 6.00 to 9.00p.m. **Secondary school meeting** 10 July, Bar Hill Church poster display and informal drop-in session from 3.00 to 6.00p.m. Presentation of bids and Q&A from 6.00 to 9.00p.m.

### Garden Party

We look forward to welcoming about 100 of you at the garden party on Monday; although there is a wet weather contingency, let's hope the sun shines on us all!

### New Bishop of Huntingdon

It was good to be present in Southwark Cathedral last week for the ordination of our new suffragan bishop, Dr David Thomson.

The Cathedral nestles next to London Bridge. As you look out of the window, you can see the trains clattering past and at the end, as we all went out, we were greeted by scores of office workers sitting on the grass enjoying sunshine and a lunchtime sandwich. It was a powerful reminder that the church's ministry, in parishes and schools is concerned with being in the midst of the bustle and realities of everyday life.

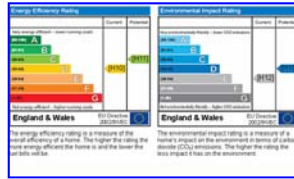
Bishop David begins his work among us in September and will be visiting each deanery in turn; perhaps your school would like to be included or a gathering of local headteachers arranged? Talk to your Rural Dean about it.

The Schools Bulletin is published fortnightly in term. We are pleased to publish news and notices. Please send details and pictures (.jpeg) and we will try to include them. Send to: [debbie.jordan@ely.anglican.org](mailto:debbie.jordan@ely.anglican.org)

## From the Schools Team: David Hicks

### Display Energy Certificates (DEC) / Energy Performance Certificates (EPC)

Many of you may have seen information from the county about "Display Energy Certificates". This directive from the European Union is effective from 1st November 2008, and applies to non domestic buildings over 1000m<sup>2</sup> occupied by a Public Authority or an institution providing a public service . This includes schools.



your energy efficiency can be improved. Full Information can be found on [www.communities.gov.uk](http://www.communities.gov.uk).

Cambs County Council suggests the cost for each school will be in the region of £1000. Fines of up to £1500 apply for not having this.

The County has identified one provider and we are looking to see if there is an alternative. It appears that there are insufficient inspectors currently to get all qualifying properties done in time.

As yet I have only heard from one school about this – if any other schools have commenced action please contact me asap – I will contact all schools again in the near future regarding this.

### School Signs

If you need your school sign replaced please contact me immediately if you have not already done so.

### Devolved Formula Capital (DFC)

Statements for VA schools to 30<sup>th</sup> June will be issued this week.

## From the Diocese

### Green Living Fair



A Greener Living Fair is being held at Ely Cathedral on Sunday 20<sup>th</sup> July 2008.

The fair will be full of information on how and why we should reduce the carbon footprint of our homes and churches. The event is being organised by the Energy Saving Trust in partnership with East Cambs District Council and the Diocesan Environment Committee.

Activities are planned for children and adults on a theme of greener living. There will also be some talks and a brief service.

It is a great opportunity to explore green products, technologies and services that can help us live more in tune

with creation. There will be exhibitors situated on the Cross Green adjacent to the Cathedral including experts and installers in the following fields:

- \* Energy efficiency
- \* Water
- \* Waste
- \* Renewable energy
- \* Transport
- \* Fair Trade



You can find out more details and pre-register for the event by phoning the Energy Saving Trust on 0800 512012.

**Anyone who registers before 20th July will be offered free entry into Ely Cathedral on the day.**

## For Governors

### Welcome to newly appointed Foundation Governors

New (or re-appointed) Foundation Governors:-

- ◆ Carol Lindsay—Elton CE Primary School
- ◆ Nick Guyer—Duchy of Lancaster CE Primary School
- ◆ Robert Shrive—Elton CE Primary School
- ◆ Jane Richardson—Wisbech St Mary CE Primary School
- ◆ Matthew Ludlow—Wisbech St Mary CE Primary School

- ◆ Boyd Myers—The Inter-Church Primary School

May I ask all Clerks to keep a check on the **terms of office** of all Foundation Governors and advise me of any re-appointments.

Thank you,  
**Debbie**



## From our Schools

### Victory in maths for Milton

Youngsters from Cambridgeshire primary schools have been performing mathematical somersaults in a national challenge.



Two thirds of the county's primary and junior schools took part in the annual Cambridgeshire Year Maths Challenge, with children practising their estimation and problem solving skills.

The final at the Imperial War Museum in Duxford was **won by**

**Milton Church of England Primary School.** Children worked from under the wing of a Vulcan bomber to solve problems based on the aircraft on display.

### Cheveley turns back the Clock

Pupils and staff at a village stepped back in time to learn about life under the Tudors.



The period, from the late 15th Century to the beginning of the 17th Century, was brought alive by the History on the Page organisation which runs historical re-enactments at schools.

Youngsters from Cheveley Primary School acted as alchemists' apprentices making soap and candles. They also learned about Tudor medicines.

Some children served at a Tudor-style banquet and others gave historical information on the life of King Henry VIII.

### Idea has legs—and school runs with it!

WACKY leg wear was on show at a Cambridge school—but it was all for a worthy cause.

Pupils and staff at St Philip's Church of England Primary School in Cambridge donned the "**wrong trousers**" to raise funds for Wallace & Gromit's Children's Foundation.



The school took part after a request from John Lewis, which has "adopted" the city school.

Siobhan Rouse, Headteacher, said "John Lewis has given us so much over the last few years, so when Community Liaison Co-ordinator Sarah Ingram asked us to wear the wrong trousers, we thought it was a cracking idea"

The foundation raises money to improve the quality of life for children in hospitals and hospices.

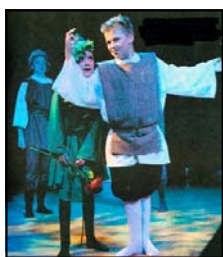
At Addenbrooke's Hospital, the foundation has already helped to buy two ventilators for the neonatal intensive care unit.



Lovely Legs: Ann Chappell, Asst Head, Mark Chase, John Lewis, Axelle Monniau, Siobhan Rouse, Headteacher, Enock Walusimbi, Ola Gajda & Stacy Harper, Asst Head

### Bard bid to boost culture

School children in Ely have starred in a concert launching a major new arts initiative in Cambridgeshire.



Youngsters from Ely St Mary's Junior School performed in front of 300 people at the Performing Arts Centre in Hinchbrook School, Huntingdon, for the launch of Cambridgeshire Culture—a drive to get more children involved in the arts.

Eight young actors performed scenes from Shakespeare's *A Midsummer Night's Dream*.

St Mary's Headteacher, James Hickish said: "It was a really exciting evening and a tremendous performance by

all the children.

"It was a privilege to perform at such a big event alongside pupils from other schools in Cambridgeshire"

Councillor David Harty, County Council cabinet member for learning, said Cambridgeshire Culture would be vital in exposing children to the benefits of performing arts.

He said: "The enjoyment and sense of achievement provided by cultural experiences can have a lasting influence on children and young people.

"They provide an opportunity for individuals to find their strengths as well as offering ways for children to understand the complex and diverse world around them."



## Hellos and Goodbyes



Mrs **Lyn Chatwin** has been appointed as the new Headteacher at William Marshall Church of England Primary School in Welney.

## The Back Page



### Dates for the Diary

### In our Prayers over the next month



Day	School
28th July	Fordham CE Primary School
29th July	Isleham CE Primary School
31st July	Teversham CE Primary School
2nd August	St Andrew's CE Primary School, Soham
4th August	Milton CE Primary School
5th August	Oakington CE Primary School

Northstowe Primary school meeting ,	9 July 6.00 - 9.00p.m	Over Community Centre
Northstowe Secondary school meeting	10 July 6.00 - 9.00p.m.	Bar Hill Church
Headteachers Conference	14th July 1.45pm- 5.15pm	Bishop Woodford House
Church Schools Garden Party	14th July 6pm- 8pm	Bishop Woodford House Gardens
Green Living Fair	20th July 2008	Ely Cathedral

### SIAS Reports

Inspection Reports (Ofsted and Statutory Church School Inspection) were published recently for the following schools:

- ◆ **Little Thetford Church of England Primary School**
- ◆ **St Martin at Shouldham Church of England Primary School**

These Inspection Reports can be read directly via the link on our website. Click on:

**"Information about Individual Schools" on the Education or Schools homepages**

### Vacancies

SCHOOL	VACANCY	CLOSING DATE
Eynesbury CE Primary School	KS2 PPA Teacher (part-time)	11.7.08
Great Wilbraham CE Primary School	Teacher (Maternity Cover)	11.7.08
Park Street CE Primary School	KS1 Class Teacher (Maternity cover)	10.7.08

Contact details for all schools can be found on our website:

[www.ely.anglican.org/education/schools/Info/Sch](http://www.ely.anglican.org/education/schools/Info/Sch)

We're on the web!

[www.ely.anglican.org/education](http://www.ely.anglican.org/education)